

PRELIMINARY

**Loading Machine** | Efficient materials handling in modern recycling

<b>ENGINE</b>	128 kW 171 HP
<b>WEIGHT</b>	27.5 t - 29 t 60,627 lbs - 63,934 lbs
<b>REACHES</b>	12.6 m (41.4') 13.7 m (45')

## THE NEW HIGH CLASS POWER-HOUSE FROM TEREX FUCHS

- ▶ High-performing 128 kW Deutz turbocharged Diesel engine (TIER III/COM III/EPA III)
- ▶ Operating weight 27.5 - 29 t (60,627 - 63,934 lbs)
- ▶ Efficient hydraulic system
- ▶ Improved lifting capacities
- ▶ Multi functional display
- ▶ Low noise level

RECYCLING MACHINE  
**MHL 340**



# HIGH PERFORMANCE

The machine can be fitted with optional equipments

# LIFT HIGHER. REACH FURTHER

THE TOP PLAYER IN



## CONTRIBUTING TO YOUR PROFIT IN THE RECYCLING BUSINESS

Success requires performance. And this is what the MHL 340 provides, in a whole new dimension - performance through high lifting capacities, long reach and fast working cycles. And all that at an operating weight of 27.5 (60,627 lbs) through 29 tonnes (63,934 lbs).

## FAR-REACHING AND STABLE

We have designed the enlarged, 2.7 m (8.9') wide undercarriage, mindful of huge recycling missions. The optimized loading system geometry and the new boom design provide enhanced lifting capacities throughout the complete operating range. And you have a choice of 12.6 m (41.4') or 13.7 m (45') reach.



# **. WORK FASTER** THE RECYCLING COMPETITION

## **FAST AND SMOOTH**

The new, 2-circuit hydraulic system is made to your advantage. Optimum utilization of hydraulic performance allows for fast working cycles; the harmonic, jolt-free control enables precise and smooth motions. Simultaneous movements of dipperstick/ grab and dipperstick/ boom are possible. Minimum power loss lowers fuel consumption and cost.

## **MACHINE FEATURES**

### **AT A GLANCE**

- ▶ Increased reach and lifting capacities through newly designed undercarriage and optimized lifting geometry
- ▶ Higher maximum operating weight
- ▶ 2-circuit hydraulic system with very high degree of efficiency and minimum power dissipation
- ▶ Fast working cycles and load-independent, combined movements





EVERYTHING WITHIN VIEW. EVERYTHING UNDER CONTROL

# CONTROLS THAT ADD VALUE



### DISPLAY FEATURES AT A GLANCE

- ▶ Large, easy-to-scan color display
- ▶ Comfortable user interface; clear symbology and text messages
- ▶ Quick data display and readout allow for rapid reaction, thus preventing maintenance problems



### MACHINE DATA - STRAIGHT TALK

The new control system tells you what's going on – plainly and clearly. A high-resolution color display concisely and unmistakably shows all relevant machine information, including fuel remaining, coolant temperature, hydraulic oil temperature or other information: Thanks to a quick readout, all essential data are promptly displayed, allowing for timely reaction, thus preventing maintenance problems.

### BENEFICIAL TO HEALTH AND SITUATIONAL AWARENESS

Large panoramic windows and the hydraulically height-adjustable cab provide excellent view without dislocating your neck. The ergonomically designed operator's workplace adjusts to your needs: A comfortable, orthopedically supportive, air-cushioned seat with lumbar support, arm and headrests is standard as well as the automatic air condition and the adjustable steering-column.



# UP WHERE YOU BELONG

EXCELLENT OUTLOOK. SAFE JOB. STRESS-FREE WORK



## CAB FEATURES

### AT A GLANCE

- ▶ Large panoramic windows
- ▶ Bright and spacious interior
- ▶ Cab infinitely hydraulically height-adjustable; eye-level up to 5.60 m (18.4')
- ▶ Orthopedically supportive air cushioned comfort seat
- ▶ Adjustable steering column
- ▶ Automatically controlled air condition standard



# HIGHER PRODUCTIVITY

## LOWER OPERATING COSTS

### GREAT PERFORMANCE, EASY ON THE EARS

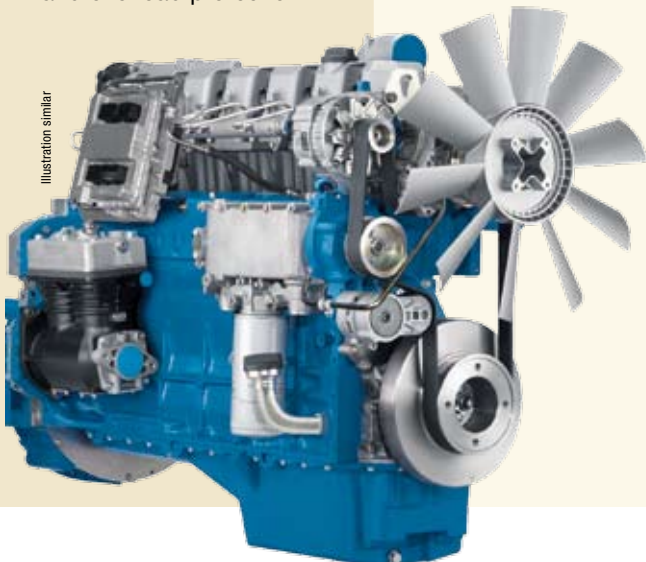
The heart of the MHL 340 is a high performing, turbocharged 6-cylinder Deutz engine rated at 128 kW @ 2.000 RPM. Thanks to the state-of-the-art load limit control, optimum performance is achieved at every speed range. Nevertheless, the powerhouse runs smoothly and quietly due to highly efficient sound deadening, low-noise pump, a large radiator and the low fan speed. A further plus for the environment is the full compliance with emission standards COM III/ Tier III. Operation in enclosed buildings is therefore feasible, causing lowest possible air pollution.

### ENGINE FEATURES AT A GLANCE

- ▶ Solid performance of the 6-cylinder turbocharged Deutz Diesel engine – 128 kW @2.000 RPM
- ▶ Low noise, low emission
- ▶ Optimum performance utilization and overload protection



Illustration similar



## FRESH IDEAS. CLEAN AIR. PERFECT TEMPERATURES A GREAT WORKING CLIMATE

### ALWAYS NICE AND COOL

The separate cooling system maintains ideal temperatures at vital points of the machine, thus reducing wear to a minimum. The hydrostatically driven oil cooling fan with thermostatic speed control and the water-intercooler that is connected by a viscous-coupling achieve excellent cooling performance while operating silently. This enables operations in ambient temperatures up to 50°C.

### MORE CLIMATE PROTECTION

Further “clean-air” options are available, especially for operations in (sorting) sheds; these include Zyklon pre-separators, filter mats and reversible fans for clean intake air. Or the particulate filter for the exhaust gases and, not least, the airtight cab with pressurization and air supply to protect the operator in pollution-prone conditions.

### COOLING SYSTEM FEATURES AT A GLANCE

- ▶ Operating temperature up to 50 °C ambient air temperature
- ▶ Excellent cooling performance and low noise emission
- ▶ Hydrostatically powered oil-cooling fan
- ▶ Thermostatically controlled oil cooling fan speeds
- ▶ Fan drive via viscous coupling at water intercooler



### NOTHING TO HIDE

For ease of maintenance, all components are accessible without difficulty via the side-mounted access and the maintenance platform. Radiator, intercooler and oil-cooler are within easy reach from the ground. Solid covers protect components from dirt.



# NEW RECYCLING EFFICIENCY

CUSTOMER FOCUS

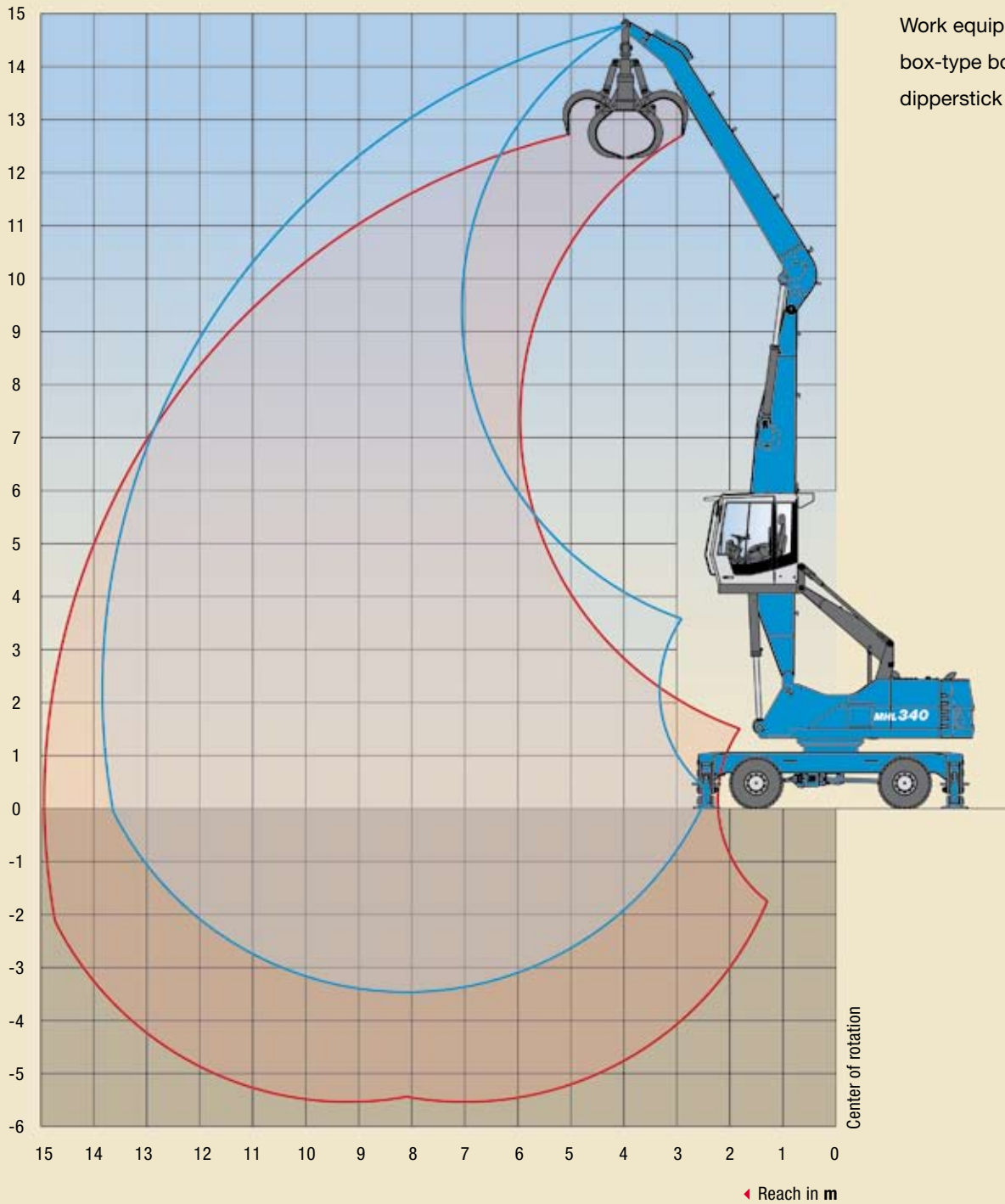


**AT NO COMPROMISE**



# WORKING DIAGRAM

MHL 340 (SERIES D) REACH 13.7 m (45')



Work equipment:  
box-type boom 7.2 m (23.6'),  
dipperstick 6.2 m (20.3')

# LIFTING CAPACITY

**MHL 340 (SERIES D) REACH 13.7 m (45')**

HEIGHT m	UNDERCARRIAGE STABILIZERS	REACHES m							
		3	4.5	6	7.5	9	10.5	12	13.5
13.5	non supported			(5.2*)					
	4-pt. supported			5.2* (5.2*)					
12	non supported				(5.3)	(3.5*)			
	4-pt. supported				5.4* (5.4*)	3.5* (3.5*)			
10.5	non supported				(5.4)	(3.9)	(2.9)		
	4-pt. supported				6.4* (6.4*)	5.3* (5.3*)	3.2* (3.2*)		
9	non supported				(5.4)	(3.9)	(2.9)		
	4-pt. supported				6.8* (6.8*)	5.9 (6.1*)	4.5 (4.9*)		
7.5	non supported				(5.3)	(3.8)	(2.9)	(2.2)	
	4-pt. supported				6.9* (6.9*)	5.8 (6.1*)	4.5 (5.5*)	3.5 (3.8*)	
6	non supported			(7.4)	(5.1)	(3.7)	(2.8)	(2.2)	
	4-pt. supported			8.6* (8.6*)	7.3* (7.3*)	5.7 (6.3*)	4.4 (5.4)	3.5 (4.3)	
4.5	non supported			(6.9)	(4.8)	(3.5)	(2.7)	(2.1)	(1.7)
	4-pt. supported			9.4* (9.4*)	7.4* (7.7*)	5.5 (6.5*)	4.3 (5.3)	3.4 (4.3)	2.4* (2.4*)
3	non supported		(9.8)	(6.3)	(4.4)	(3.3)	(2.6)	(2.0)	(1.6)
	4-pt. supported		14.2* (14.2*)	10.1 (10.3*)	7.0 (8.1*)	5.3 (6.6*)	4.1 (5.2)	3.3 (4.2)	2.7 (3.1*)
1.5	non supported		(8.5)	(5.6)	(4.1)	(3.1)	(2.4)	(1.9)	(1.6)
	4-pt. supported		15.1 (15.6*)	9.4 (10.9*)	6.6 (8.4*)	5.0 (6.3)	4.0 (5.0)	3.2 (4.1)	2.7 (3.2*)
0	non supported	(3.1*)	(7.6*)	(5.1)	(3.8)	(2.9)	(2.3)	(1.9)	(1.6)
	4-pt. supported	3.1* (3.1*)	7.6* (7.6*)	8.8 (10.8*)	6.3 (8.1)	4.8 (6.1)	3.9 (4.9)	3.2 (4.0)	2.7 (2.8*)
-1.5	non supported		(6.7*)	(4.9)	(3.6)	(2.8)	(2.2)	(1.9)	
	4-pt. supported		6.7* (6.7*)	8.5 (10.0*)	6.1 (7.8*)	4.7 (6.0)	3.8 (4.8)	3.1 (3.8*)	
-3	non supported			(4.8)	(3.5)	(2.7)			
	4-pt. supported			8.4* (8.4*)	6.0 (6.7*)	4.6 (5.3*)			

Capacity values are stated in metric tons (t) or lbs. The pump pressure is 355 bar (5148 psi). The values, in accordance with ISO 10567, amount to 75 % of the static tipping load or 87 % of the hydraulic lifting force (marked \*). They apply to slewing operations through 360° on a firm and level surface. Values in brackets apply to the longitudinal direction of the undercarriage. "Non-supported" values only apply when the load is hoisted above the front or rear axle. The weight of the attached hoisting equipment (grab, magnet, load hook) must be deducted from the capacity values. If the TEREX Fuchs quick-change system is mounted on the boom, capacity is reduced by 300 kg (661 lbs). In accordance with EC guidelines, hose-rupture safety valves on the lift cylinders and an overload warning device are required for crane operations.

## RECOMMENDED ATTACHMENTS

Loading system 13.7 m (45')

<b>LIFT HOOKS</b>	10 t
<b>TEREX Fuchs CACTUS GRABS 0.4 m<sup>3</sup></b>	Open or half-closed shells
<b>TEREX Fuchs CACTUS GRABS 0.6 m<sup>3</sup></b>	Open or half-closed shells
<b>TEREX Fuchs MAGNET PLATE MP 1350</b>	dia. = 1350 mm with magnet system 17 kW
<b>CLAMSHELL GRAB 0.65 m<sup>3</sup></b>	Density of bulk material up to 1.400 kg/m <sup>3</sup>
<b>CLAMSHELL GRAB 1.0 m<sup>3</sup></b>	Density of bulk material up to 800 kg/m <sup>3</sup>

# TECHNICAL DATA

## MHL 340 (SERIES D)



OPERATING WEIGHT	
	27,5 t - 29 t (60,627 lbs - 63,934 lbs)

DIESEL ENGINE	
<b>MANUFACTURER AND MODEL</b>	Deutz TCD 2012 L06 2V
<b>DESIGN</b>	6 Cylinder Inline
<b>ENGINE CONTROL</b>	EMR III
<b>TYPE</b>	4-stroke diesel engine, direct common-rail fuel-injection, turbocharger with intercooling
<b>ENGINE OUTPUT</b>	128 kW (171 HP)
<b>NOMINAL SPEED</b>	2000 min <sup>-1</sup>
<b>DISPLACEMENT</b>	6,0 l (1.6 US GAL)
<b>COOLING SYSTEM</b>	Liquid intercooling with temperature controlled fan speed
<b>EMISSION STANDARDS</b>	COM III and EPA Tier III
<b>AIR FILTER DESIGN</b>	Two-stage filter with safety valve
<b>FUEL CAPACITY (USABLE)</b>	370 l (98 US GAL)

ELECTRICAL SYSTEM	
<b>OPERATING VOLTAGE</b>	24 V
<b>BATTERIES</b>	2 x 12 V / 100 Ah / 760 A (in accordance with EN)
<b>LIGHTING SET</b>	1 dipper-stick-mounted floodlight, 1 headlight mounted to upper carriage, 1 floodlight attached to cabin floor, rear side-marker and turn signal lamps
<b>OPTION</b>	Magnet plate 13 kW or 17 kW

TRAVEL DRIVE	
	Hydrostatic drive through infinitely variable axial piston motor and directly mounted; travel brake valves, two-speed power shift gear, 4-wheel drive
<b>TRAVEL SPEED 1ST GEAR</b>	max 5 km/h (3.1 mph)
<b>TRAVEL SPEED 2ND GEAR</b>	max 20 km/h (12.4 mph)
<b>GRADEABILITY</b>	max 45%
<b>TURNING RADIUS</b>	8.2 m (26.9')

SWING SYSTEM	
<b>RING GEAR</b>	Internally toothed ball ring gear (double row)
<b>DRIVE</b>	Three-stage planetary gear with integrated multi-disc brake
<b>UPPER CARRIAGE SWING SPEED</b>	Infinitely variable from 0 - 8 min <sup>-1</sup>
<b>PIVOT BRAKE</b>	Electrically operated

UNDERCARRIAGE	
<b>FRONT AXLE</b>	Planetary drive axle with integrated drum brake, rigidly mounted max steering angle : 27°
<b>REAR AXLE</b>	Oscillating planetary drive rear axle with integrated drum brake and selectable oscillating axle lock
<b>STABILIZERS</b>	4-point-stabilizers
<b>TIRES</b>	Solid rubber, elastic tires 8-fold 10.00 - 20



BRAKE SYSTEM	
<b>SERVICE BRAKE</b>	Hydraulically operated single circuit brake system acting on all four wheel pairs
<b>PARKING BRAKE</b>	Electrically operated disc brake at transmission, acting on both front and rear axle

HYDRAULIC SYSTEM	
	LINDE mobile hydraulic system with load limit control and fuel conserving power demand control. Separate oil cooler, temperature controlled fan speed. Hydraulic oil filter: integrated in the oil tank; maintenance interval: 3.000 operating hrs. Central lubrication system
<b>MAX PUMP CAPACITY</b>	2 x 320 l/min
<b>MAX OPERATING PRESSURE</b>	325/ 355 bar (4714 - 5148 psi)
<b>HYDRAULIC OIL TANK</b>	354 l (94 US GAL)

OPERATOR CAB	
	Elastically supported, infinitely variable hydraulically height-adjustable with max. eye level of 5.6 m (18.4'). Sound-deadened, heat-insulated panoramic windows for optimum all-around view. Windshield with pull-down sunblind that slides under cab roof, sliding window in cab door. Steering column, height and tilt adjustable
<b>HEATING</b>	Infinitely variable hot water heating with 3-speed fan, 4 adjustable defroster nozzles.
<b>OPERATOR'S SEAT</b>	Air-cushioned comfort-seat with integrated headrest, safety belt and lumbar support, seat-heating with integrated a/c function optional. Seat position, seat inclination and seat cushion multi-adjustable in line with position of armrests and pilot control units, allowing fatigue-free operation.
<b>MONITORING</b>	Ergonomic instrument layout, glare-free. Function monitoring; warning and storage of deviating operating conditions, e.g. filter pressure w. warning indicator and shutdown of pilot controls, warning indicator resp. shutdown of pilot controls when exceeding hydraulic oil temperature limits.
<b>AIR CONDITION</b>	Automatic air condition
<b>SOUND POWER LEVEL</b>	(guaranteed) in accordance with guideline 2000/14 EG. L <sub>W(A)</sub> = 101 dB(A)

SAFETY INSTALLATIONS	
	For crane operations in accordance with EN 474-5.
	Cab protection by close proximity range limiter

OFFICIAL HOMOLOGATION	
	Certification according to CE-regulations

# EQUIPMENT

## MHL 340 (SERIES D)

ENGINE	SERIES	OPTION
Turbocharger	●	
Intercooling	●	
Direct electronic fuel injection/common Rail	●	
Automatic idle	●	
Engine pre-heating		●
Interface for engine diagnosis	●	
Fan drive temperature controlled	●	

UNDERCARRIAGE	SERIES	OPTION
2-speed power-shift transmission	●	
4-point-stabilizers	●	
4-point stabilizers individually controllable		●
Stabilizer (outrigger) cylinders with integrated two-way check valves	●	
All-wheel drive	●	
Piston rod protection on stabilizer cylinder	●	
Stabilizer (outrigger) plate 500 x 350	●	
Rear axle oscillating lock	●	
Special paint		●
Drum brakes	●	
Tool box	●	

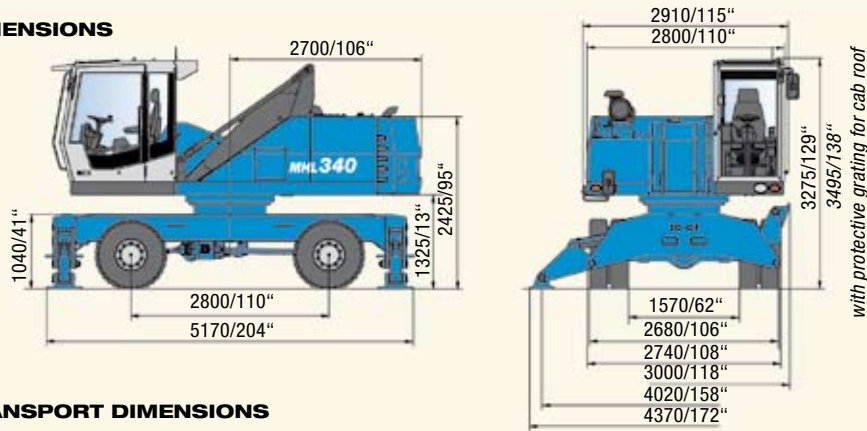
UPPER CARRIAGE	SERIES	OPTION
Electrical refueling pump		●
Lighting protection		●
Maintenance hood, actuated by gas spring, w. mechanical locking device	●	
Lockable cleaning access openings on radiator	●	
Separate radiator system for ambient temperatures up to 50°C	●	
Separate oil cooler w. temperature controlled fan drive	●	
Automatic central lubrication system	●	
Special paint		●
Quick-drain valve on fuel tank (delivered in tool box)	●	
Quick-drain valve on hydraulic oil tank	●	
Quick-drain valve on radiator	●	
Quick-drain valve on engine-oil pan	●	
Reversible fan for radiator and hydr. oil cooler		●

CAB	SERIES	OPTION
Lift-up skylight in cabin roof	●	
Air cushioned operator's seat with headrest, safety belt and lumbar-support	●	
FOPS-protective grating		●
Front/roof protective grating		●
Hinged front windshield	●	
Front-windows break-resistant (LEXAN)		●
Bulletproof glass, front and top		●
Cab system, height adjustable	●	
Air condition	●	
Steering column, height and tilt adjustable	●	
Multi functional display	●	
Fire extinguisher, dry powder		●
Preparation for radio		●
Cassette radio		●
Radio and CD Player		●
Rotating beacon		●
Sliding window in cab door	●	
Safety glass	●	
Seat heating with integrated a/c function		●
Engine independent heating		●
Windscreen washer system	●	

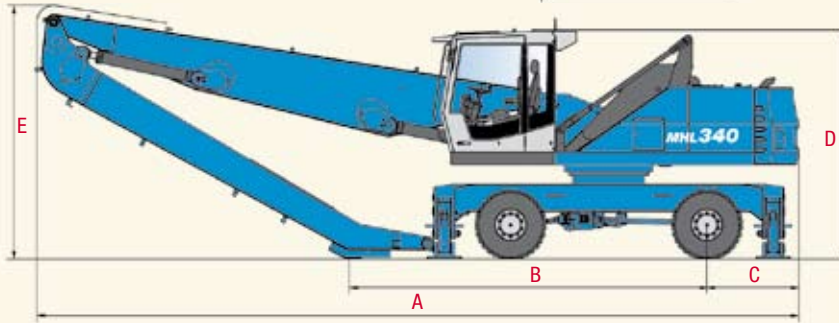
EQUIPMENT	SERIES	OPTION
Working floodlights on cab floor	●	
Working floodlights on upper carriage	●	
Floodlight, dipperstick mounted	●	
Hydraulic oil preheating		●
Close proximity range limiter for dipperstick	●	
Coolant and hydraulic oil level monitoring system	●	
Break protection for lift cylinder		●
Pipe break protection for stick cylinder		●
Dipperstick shock protection	●	
Lubrication of grab suspension by central lubrication system	●	
Overload protection/shutdown		●
XENON-floodlight on dipperstick		●
XENON-floodlight , upper carriage		●
XENON-floodlight on cab roof		●
Quick-connect coupling on dipperstick	●	



**DIMENSIONS**



**TRANSPORT DIMENSIONS**



DIMENSIONS	REACH 12.6 m (41.4')	REACH 13.7 m (45')
A	11,000 mm (433")	11,000 mm (433")
B	5,900 mm (232")	5,000 mm (197")
C	1,300 mm (51")	1,300 mm (51")
D	3,275 mm (129") / *3,495 mm (*138")	3,275 mm (129") / *3,495 mm (*138")
E	3,250 mm (128")	3,600 mm (142")

\* with protective grating for cab roof

**DISTRIBUTOR**